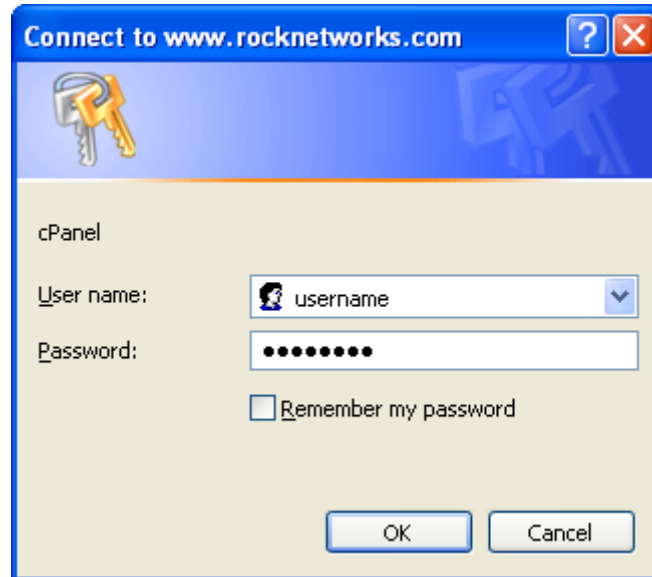


To log into your control panel

1. In your web browser, type the following site:

<http://www.yourdomain.com:2082>

2. You will be prompted for a username and password.



3. Enter your username in the username field, and your password in the password field.

4. You will then be logged into your control panel:

The screenshot shows the cPanel control panel interface. At the top, there is a navigation bar with "HOME" and "LOGOUT" links. Below this is a banner image featuring the cPanel logo and a woman sitting at a computer. The main content area includes a welcome message for "rocknetworks.com!", a "Last login from" timestamp, and a "Manage another account" dropdown menu. A section titled "Please update your contact information here." is followed by two columns of information: "General account information" and "General server information".

General account information:

Hosting package	RockNet
Dedicated Ip Address	72.29.82.45
Subdomains	16 / unlimited
Parked Domains	1 / 10
Addon Domains	0 / 10
MySQL Databases	12 / unlimited
Disk usage	1844.28 Megabytes
SQL Disk usage	4.24 Megabytes
Disk space available	3155.72 Megabytes
Bandwidth usage (current month)	255.29 Megabytes
Email Accounts	14 / unlimited
Email Forwarders	14
Auto-responders	0
Mailing Lists	1 / unlimited
Email filters	5
Ftp Accounts	4 / unlimited

General server information:

Operating system	Linux
------------------	-------

The right-hand side of the interface contains a grid of 25 icons representing various system management tools, including Mail, Webmail, Change Password, Parked Domains, Addon Domains, FTP Manager, File Manager, Disk usage, Backup, Password Protect Directories, Error pages, Subdomains, MySQL Databases, SSH/Shell Access, Redirects, Frontpage Extensions, Web/FTP Stats, Raw Access Logs, Raw Log Manager, Error log, Subdomain Stats, Chatroom, PhpMyChat, Bulletin Board, and CGI Center.