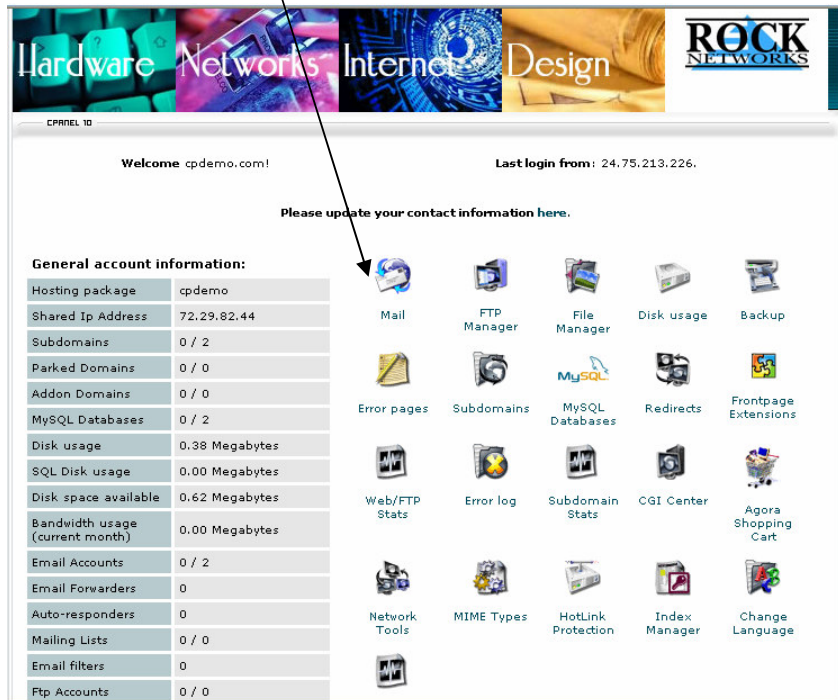


To Set Up your email client automatically. (only for Outlook and Outlook Express)

1. Log into your control panel
2. Click on the Mail icon



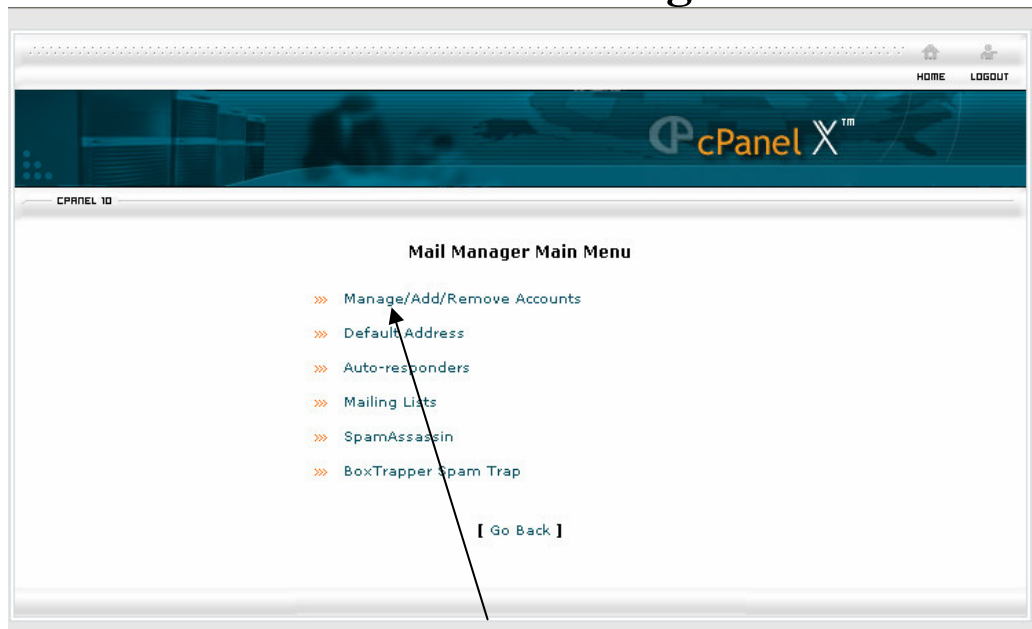
The screenshot shows a web hosting control panel interface. At the top, there is a navigation bar with the text 'Hardware Networks Internet Design' and the 'ROCK NETWORKS' logo. Below this, the user is logged in as 'cpdemo.com!' with the last login from '24.75.213.226'. A message says 'Please update your contact information here.' On the left, there is a 'General account information' table. On the right, there is a grid of icons for various services. An arrow points to the 'Mail' icon in the top row of the grid.

General account information:	
Hosting package	cpdemo
Shared Ip Address	72.29.82.44
Subdomains	0 / 2
Parked Domains	0 / 0
Addon Domains	0 / 0
MySQL Databases	0 / 2
Disk usage	0.38 Megabytes
SQL Disk usage	0.00 Megabytes
Disk space available	0.62 Megabytes
Bandwidth usage (current month)	0.00 Megabytes
Email Accounts	0 / 2
Email Forwarders	0
Auto-responders	0
Mailing Lists	0 / 0
Email filters	0
Ftp Accounts	0 / 0

Grid of icons:

- Mail (highlighted)
- FTP Manager
- File Manager
- Disk usage
- Backup
- Error pages
- Subdomains
- MySQL Databases
- Redirects
- Frontpage Extensions
- Web/FTP Stats
- Error log
- Subdomain Stats
- CGI Center
- Agora Shopping Cart
- Network Tools
- MIME Types
- HotLink Protection
- Index Manager
- Change Language

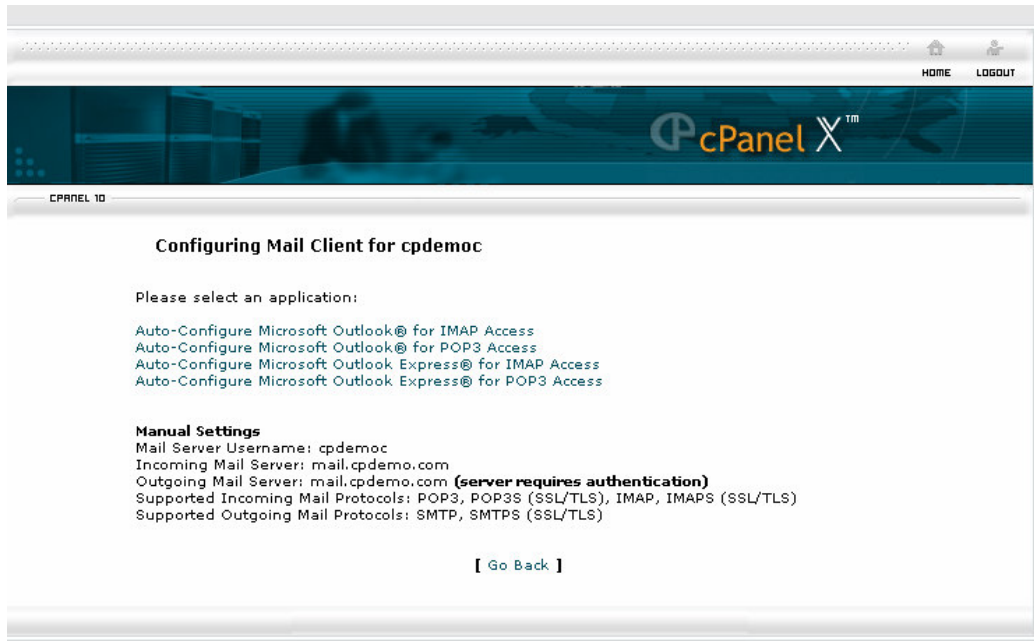
3. You will see the Mail Manager menu



4. Click on Manage/Add/Remove Accounts



5. Click on Configure Mail Client next to your email address



- 6. Select the email client you wish to setup and click on the link. Follow the on screen prompts, and choose Run from current location if asked, and let the utility enter the information into your registry.**